

# Groundwork North East

---



Keeping the 'Green' in Green Infrastructure

The Crucial Role of Biodiversity in GI

David M Walton, MA, MIEMA

Tees Valley Green Infrastructure Programme Manager



# Quick Introduction:

- David M Walton
- Tees Valley Green Infrastructure Programme Manager
- Hosted by Groundwork and funded by Natural England, Tees Valley Unlimited (JSU/Tees Valley Living), Groundwork, Forestry Commission

Responsible for (amongst other things)

- Ensuring Growth Point Sites integrate GI
- Promotion of GI and assisting with Implementation Plan, funding opps and apps
- Identifying GI initiatives and opportunities
- Acting as a GI consultant to TVU/Las on major transport/planning schemes
- Embedding GI into local authority plans and supporting GI strategy development

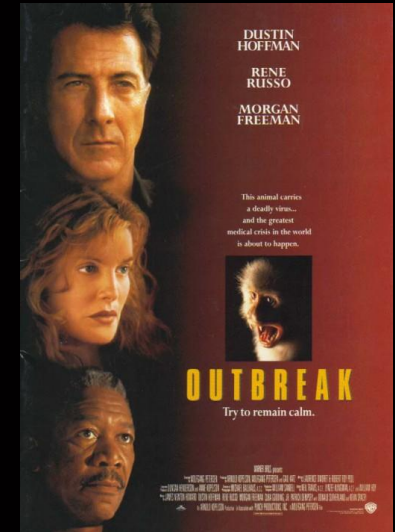
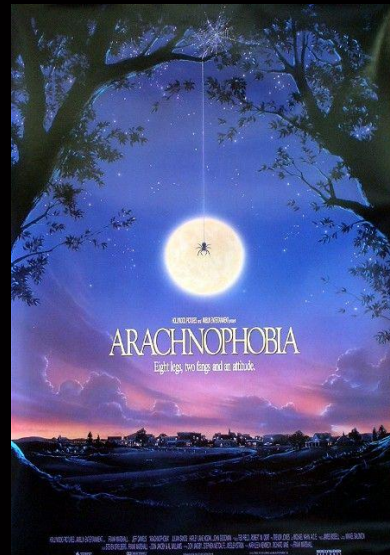
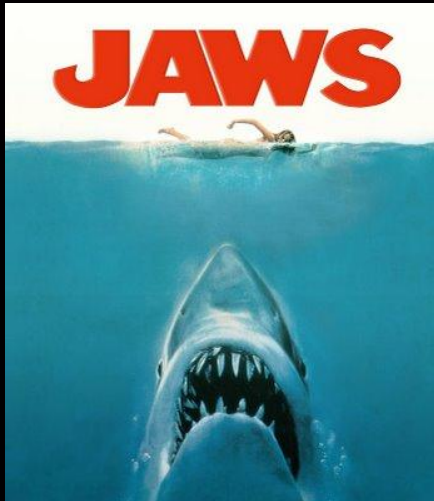


# The role of Biodiversity in multi functional Green Infrastructure



# Why don't we recognise the value of Biodiversity?

## Man Vs Nature!



Green Infrastructure is about green space with many functions!

With multi-functionality comes multi opportunity...

...but to lose sight of what truly makes GI Green would be a mistake!



- Competition for functions such as;
- Recreation space
- Amenity grassland
- Flood defence
- Play areas
- Sustainable Drainage Systems



Crucial you say.....

‘Yes Dave, were only  
here because of nature,  
It supports and enriches us’

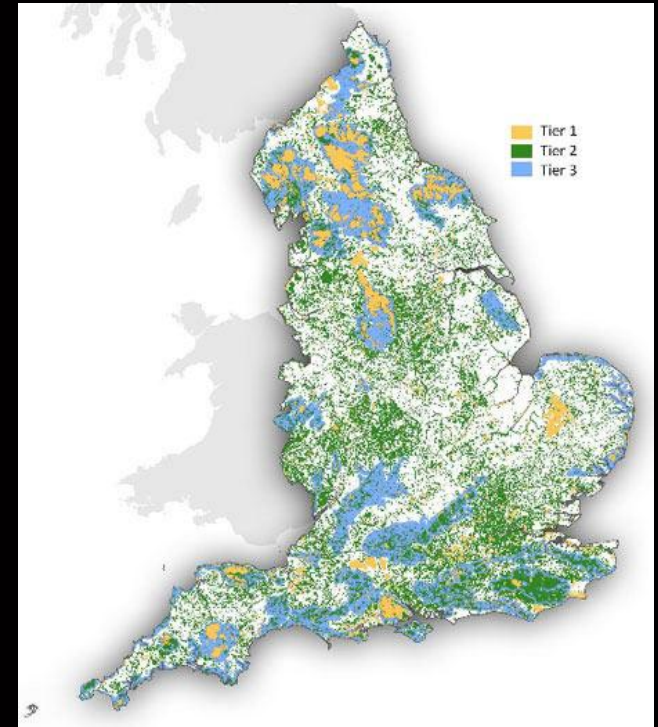


Dave hugs Tree, Stobo Castle, 2008



Thanks for clearing that up! What's going on then?

- Government Review shows we are failing species
- Report shows lack of interconnections for wildlife
- Report says wildlife sites are not close enough to urban areas
- Formally protected wildlife sites make up 7% of England's land
  
- What about the rest?
- Housing and Development Impacts
- Climate Change
- Habitats such as hedgerows or river corridors that are in poor condition



# The role Biodiversity in multifunctional Green Infrastructure

Creates site appeal and engages people, enriching their quality of life

- Creates aesthetic improvements, raising aspirations, ownership and local pride ( Red Kites example in areas of Gateshead)
- Creates economic benefits such as wildlife tourism (see above, re Black Horse pub in Barlow, Gateshead)
- Creates community cohesion and understanding of local environment
- Ensure a built in mechanism to protect against climate impacts
- Improves the quality of landscape character, and provides other essential ecosystem services (flood control, water quality, etc)
- Enables developers, planning authorities to meet many requirements at once, ( i.e create a SuDs pond with wildlife and tree planting and you've cracked PPS9, PPS25, PPS1, NERC and Biodiversity duty, Code Level 5&6 and a whole host of other benefits in one site)



# Integrating Biodiversity into Green Infrastructure development

- Interconnected Areas that create BAP habitat and support BAP species as well as connectivity for people
- Ensuring native species in new Community Woodland to provide social, economic and environmental benefit
- Role of even low ecologically valued habitat in providing ecosystem services
- New sites for Biodiversity difficult to fund so use the statutory requirement for other areas to sneak Biodiversity into sites and developments such as Swales and Bioretention features, Parks with wildflower meadows, areas for flood management
- Encourage the understanding of nature with promotion of BAP habitat and species such as charismatic species.....



....charismatic species you say....



....charismatic species....sorry Im thinking of larger even more charismatic animals.....



Note the GI adjacent hasn't yet been cut!

....perhaps emphasis on BAP Species that communities can engage and identify with..



....and BAP habitat that people can walk through, cycle through, relax in, hold events in.....

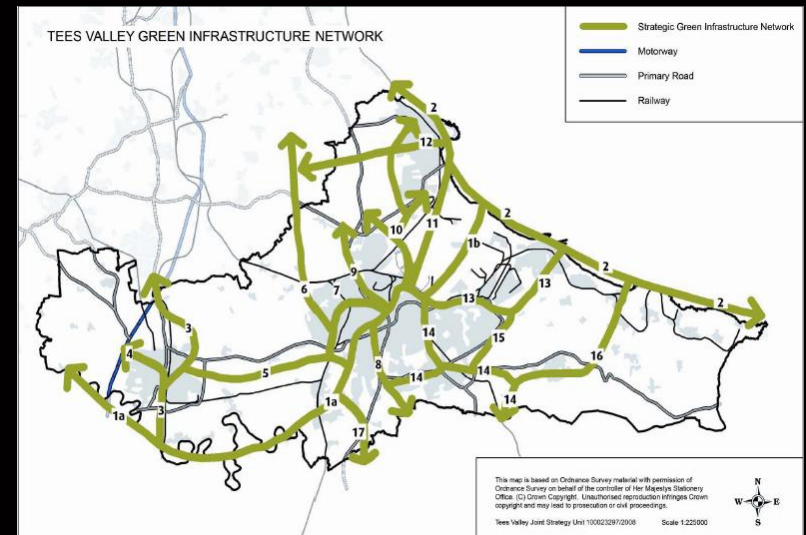
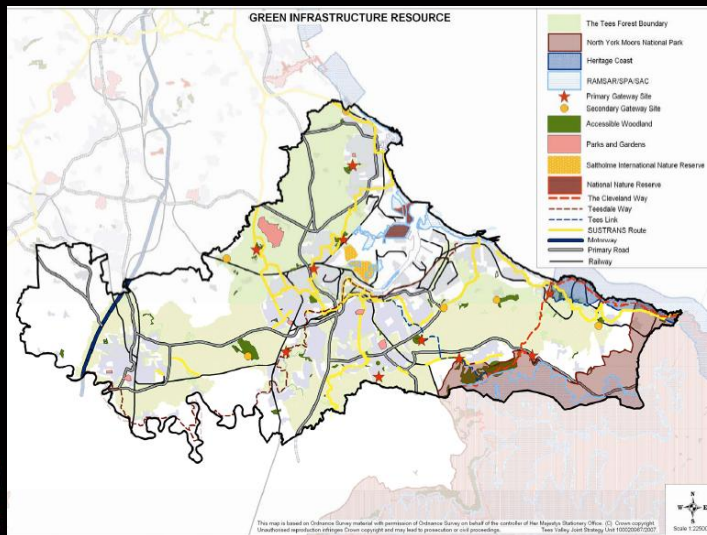


Community Woodlands, grant funded through Forestry Commission, now funding 30m x 30m blocks in Urban Areas, which create multifunctional GI, native and most importantly BAP Habitat.....

# Significant Green Infrastructure Resource in Tees Valley

## Challenge!

Ensure that GI is enhanced and joined up through new developments (Growth Point sites, Flagship regeneration), planning process and where possible continuation of current or new projects



River Tees Corridor, Albert Park, Lustrum Beck, Merrybent Community Woodland, 18 Future Growth Point Sites, West Park, Saltholme Reserve, Tees Barrage, Maze Park, Portrack Nature Reserve, Sustrans National Cycle Network, Tees Mouth, Hartlepool to Cowbar Coast, River Skerne, Billingham Beck, Stainsby Beck Valley, Hartlepool Quays, Marton Beck Linear Park, River Leven Corridor, The Tees Forest, Teesdale Way, Ropner Park, North York Moors National Park, Cycling Town (Darlington), South Park, Saltburn Valley Gardens, Tees Estuary SPA and RAMSAR Site, Rossmere Park, Summerhill, Central Park, Bowesfield, Coatham Marsh, Hemlington Lake & Recreation Centre, Seaton Carew Beach, Darlington's Tree Lined Streets i.e Pierremont, Baysdale Beck Radial Route, Eston Moor, Errington Woods, River Tees Heritage Park, Preston Park and Hall, Bruntoft Avenue Allotments, The Wave Victoria Harbour, South Burdon Community Woodland etc etc !!!

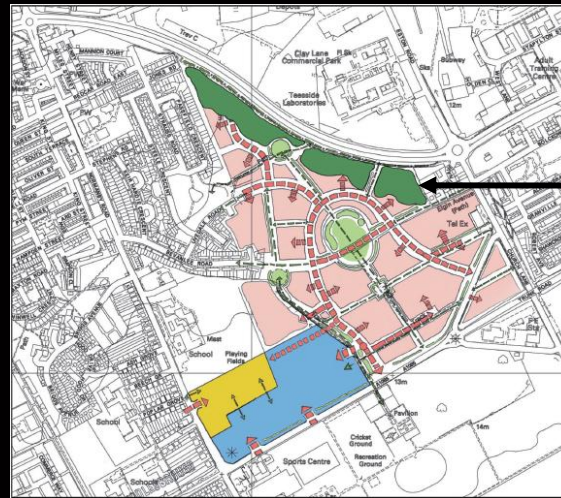
## What about when it goes right?



Marton West Beck as part of proposed linear park.



West Park, Darlington, an exemplar project with recreational space, wetland, woodland and watercourses.



Low Grange Community Woodland, BAP habitat, Native Species and liveability!

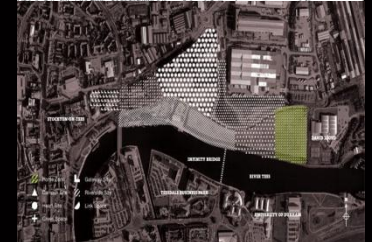
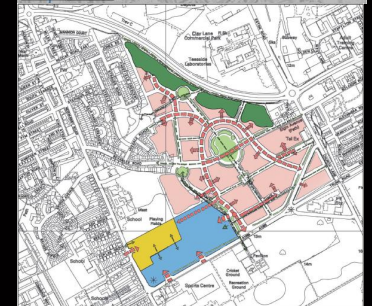
# Getting Biodiversity and GI into Development



What Green Infrastructure can we expect to contribute to Biodiversity? Heres a few in the pipeline.....

.....hit them with the Community Woodland again, you are Funded by Forestry Commission and its an easy win....

- Grove Hill Linear Park, advocating BAP species and habitat alongside potential community woodland
- Low Grange community woodland, application in this week to create around 6ha of new woodland
- North Shore, working with TVU on community woodland and potential biodiversity and SuDs areas
- Golden Flatts, community woodland proposal alongside multi user routes and SuDs pond with possible biodiversity benefit



Questions remain.....

- Can biodiversity targets really be met in multifunctional Green Infrastructure developments?
- Will hatchet man Pickles etc cut budgets so significantly that budgets for wildlife sites, local authorities, Defra and FCOM are slashed and burned?
- How can biodiversity be slotted into the localism agenda?
- Can the case be made for building biodiversity into areas of traditional grey infrastructure dominance such as Drainage, Flood Management, Highways and Public realm for economic benefit?
- What innovative ways can be found to ensure biodiversity is understood, funded and maintained for society, the economy that relies on it and for the natural environment?

Thank you

Questions and Comments are welcome



Groundwork North East operates throughout the region.

Our local offices can be found in:

**Tees Valley**

Darlington: 01325 353 791

Middlesbrough: 01642 815 663

Redcar & Cleveland: 01287 625 326

David M Walton, MA, MIEMA

Tees Valley Green Infrastructure Programme Manager

Groundwork North East (Darlington Office)

07760619490

david.walton@groundwork.org.uk

**[www.groundwork-northeast.org.uk](http://www.groundwork-northeast.org.uk)**

