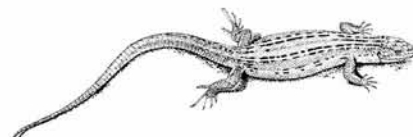


What to look for?

British amphibian and reptiles

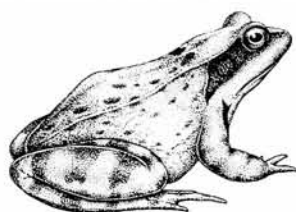
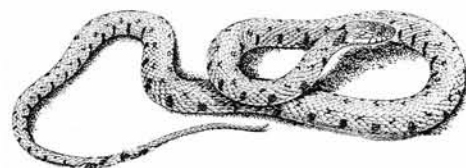
Common lizard Long pointed tail, pointed nose, long toes. Up to 14cm (5½ inches) in length. Usually brown, sometimes greenish or dark with speckled markings. Often noticed on warm sunny surfaces and scuttles off at speed when approached.



Slow-worm Snake-like lizard, with a bullet-shaped head. Bronze or copper coloured, sometimes with darker flecks, or thin dark stripe down middle of back and darker sides. Up to 50cm (21 inches) in length. A slug and worm eater which hunts by night. By day, often found under warm flat objects, such as pieces of rubber, tin, old carpet or plastic.

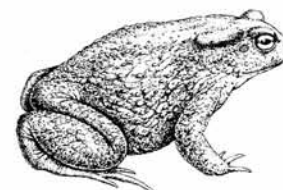


Grass snake Up to 150cm in length (five foot). Olive green body, with distinct yellow and black collar behind head and variable black flecks along body. Seen swimming with head above water in ponds. May be curled up amongst dense vegetation or beside compost heap.



Frogs Smooth skinned, powerful jumpers with muscular hind legs. Their spawn (early spring) is laid in cauliflower-sized clumps. Their nose and eyes may be seen on the surface of the pond or they may be seen hopping out when disturbing vegetation.

Toads Rough-skinned animals that tend to crawl rather than hop. Their spawn is laid in strings, wrapped around pondweed. May be found in cool damp areas, under vegetation.



Newts Lizard-shaped, they have a long body and a tail, but crucially they lack scales. They are found in water and can be found on land. May be found sheltering in piles of rubble, or logs.

Line drawings used with kind permission from English Nature

Where to look?

- Under pieces of corrugated iron, carpet or plastic sheeting which has heated up in a sunny, well-vegetated spot. Reptiles often lie under these objects in order to warm themselves, safe from predation by birds and cats
- On sunny walls, especially those which have crevices between the brick or stone
- On undisturbed sunny slopes or banks
- In or around compost heaps
- In ponds
- Under logs or rocks

FROGLife

White Lodge, London Road, Peterborough PE7 0LG

tel: 01733558844 email: info@froglife.org visit: www.froglife.org

protecting amphibians and reptiles in the wild

Feb

Mar

Apr

May

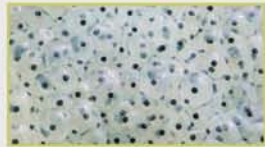
Jun

Jul

Aug

Sep

Oct



Frogs and toads spawn

Frogs and toads



Tadpole metamorphosis



Frog disease...

In the humid months incidence of frog disease dramatically increases. Contact Froglife for details of what to look out for, or visit our website, www.froglife.org for more information.



Toads on roads!

Between March and April, thousands of toads make their annual migrations to ancestral breeding ponds. Many of them will die on roads along the way—to see what you can do to help, contact Froglife or visit: www.froglife.org

Reptiles



Reptiles active



Grass snakes lay eggs



Grass snakes hatch

Snakes in gardens!

Snakes and slow-worms are on the decline and gardens look like becoming one of their most valuable retreats! To find out what you can do to help attract these rare, protected visitors, you can find all you need to know on our website: www.froglife.org

Newts



Newts lay eggs



Newt larvae



Juvenile newts emerge from ponds



...amphibians and reptiles need your help — Get involved! www.froglife.org